

1ST READING
2ND READING
INDEX NO.

5/31/11
6-7-11

MR-2011-052
Vision Hospitality Group
District No. 4

ORDINANCE NO. 12511

AN ORDINANCE CLOSING AND ABANDONING A PORTION OF A RIGHT-OF-WAY IN THE OPEN 2000 BLOCK OF SKYLINE DRIVE BEGINNING AT THE SOUTHERN BOUNDARY OF THE PROPERTY AT TAX MAP NO. 148M-G-008, MORE PARTICULARLY DESCRIBED HEREIN, SUBJECT TO CERTAIN CONDITIONS.

SECTION 1. BE IT ORDAINED BY THE CITY COUNCIL OF THE CITY OF CHATTANOOGA, TENNESSEE, That there be and is hereby closed and abandoned a portion of a right-of-way in the open 2000 block of Skyline Drive beginning at the southern boundary of the property at Tax Map No. 148M-G-008, more particularly described below and as shown on the maps attached hereto and made a part hereof by reference:

Abandonment of a portion of the 2000 block of Skyline Drive beginning at the southeast corner of Tax Map 148M-G-008 thence some 390 feet northeast to a dead-end. Said drive separates Lots 3 thru 5, Resubdivision of Lot 13 of the Frank Kelley Subdivision, Plat Book 28, Page 78, ROHC, from Lot 1, Revised Plat of Lot 1 and Lot 2, CBL's Addition to the Hamilton Place Area Subdivision, Plat Book 85, Page 13, ROHC. Tax Map Nos. 148M-G-005, 007 and 008.

SECTION 2. BE IT FURTHER ORDAINED, That this closure and abandonment shall be subject to the retention of all utility easements and routing rights, in perpetuity, and at the Utility's discretion; and subject to a turnaround as per City Standards.

SECTION 3. BE IT FURTHER ORDAINED, That this Ordinance shall take effect two (2) weeks from and after its passage.

PASSED on Second and Final Reading

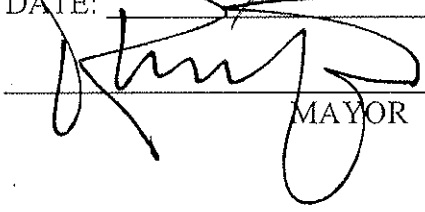
June 7, 2011.



CHAIRPERSON

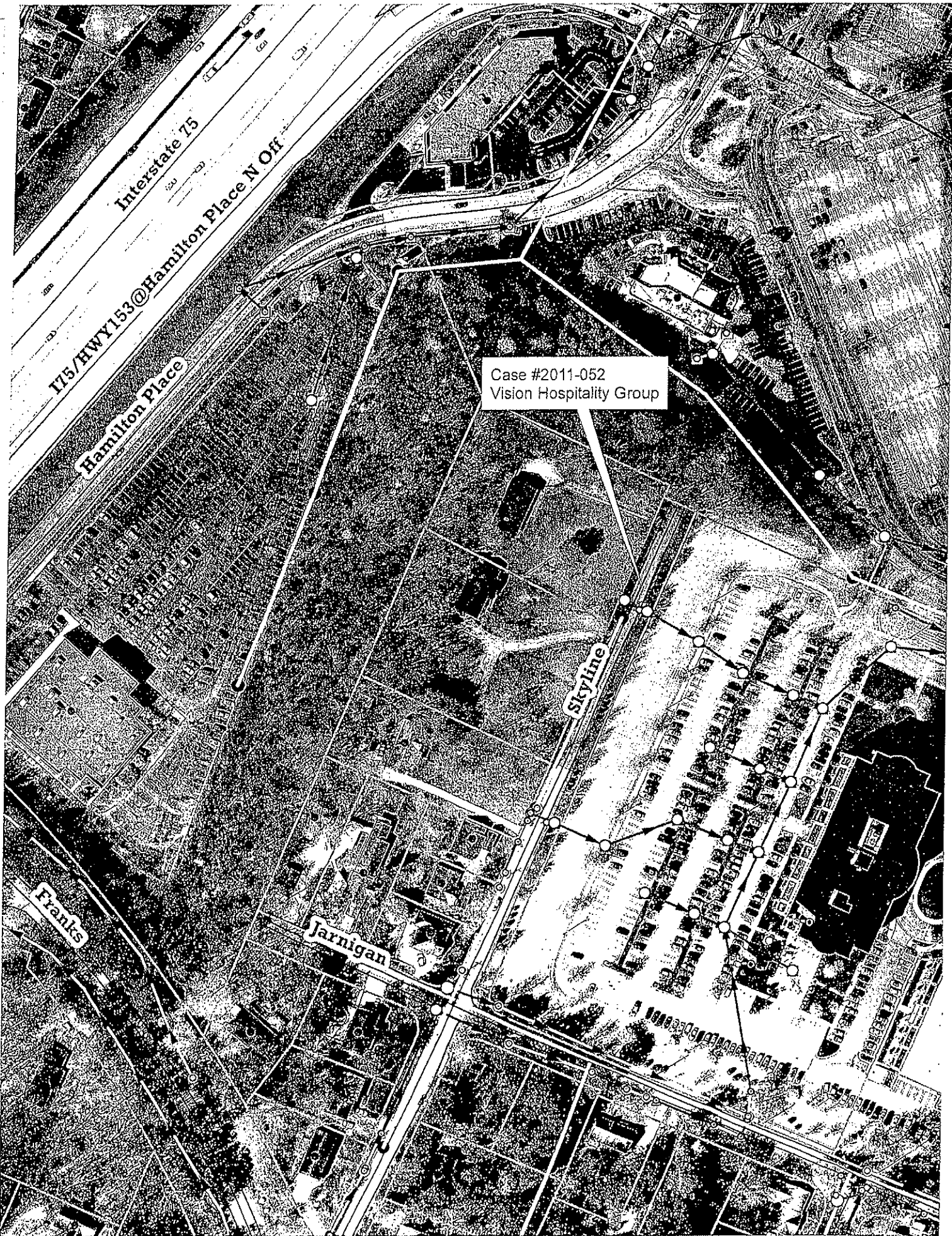
APPROVED: DISAPPROVED:

DATE: 6/13, 2011.

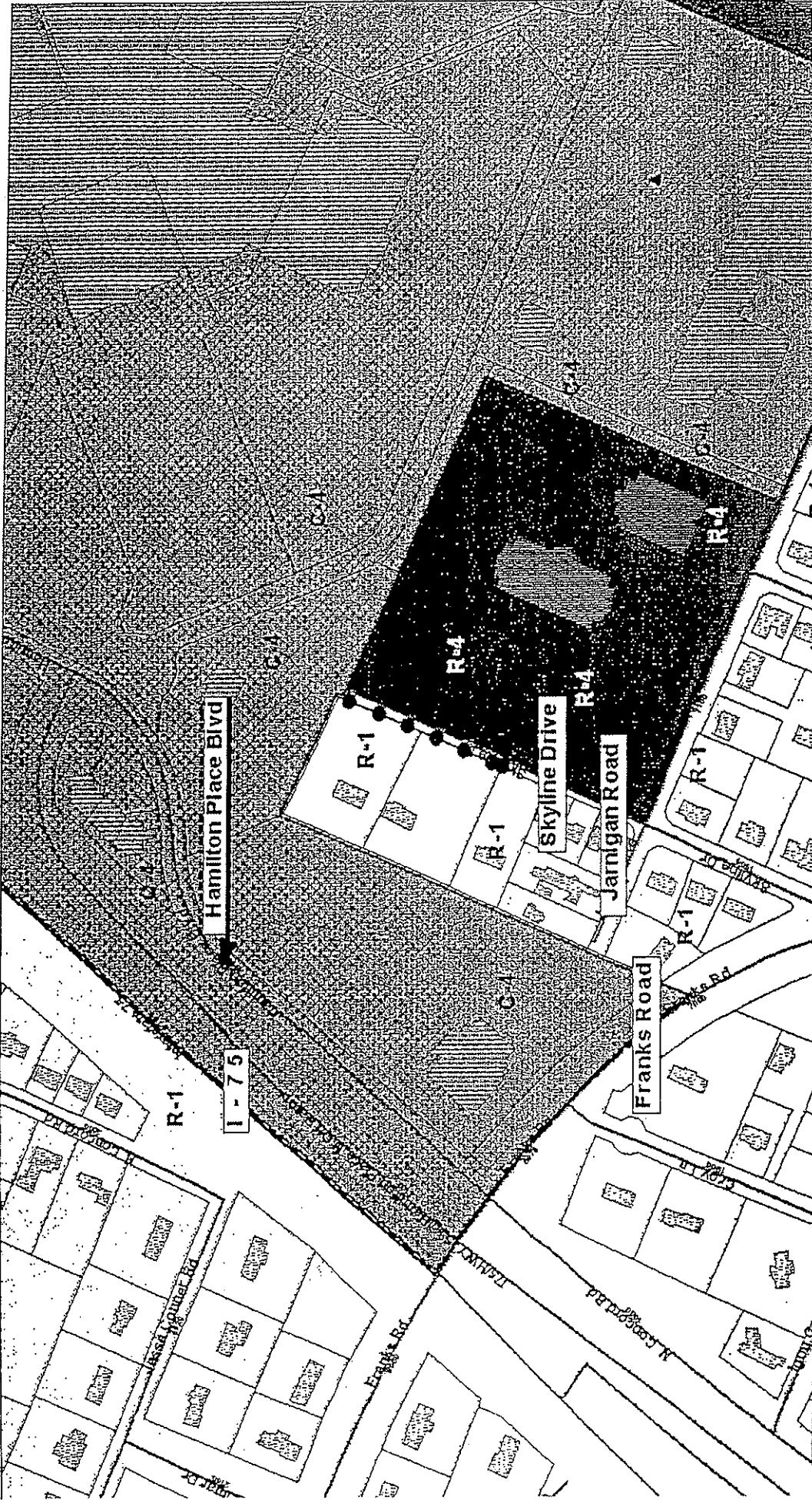


MAYOR

/mms



Case #2011-052
Vision Hospitality Group

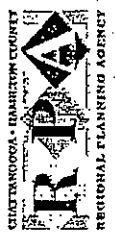


PLANNING COMMISSION RECOMMENDATION FOR CASE NO. MR-2011-052: Approve subject to approval of the City Traffic Engineer, the Fire Department, City Engineer and all public utilities.

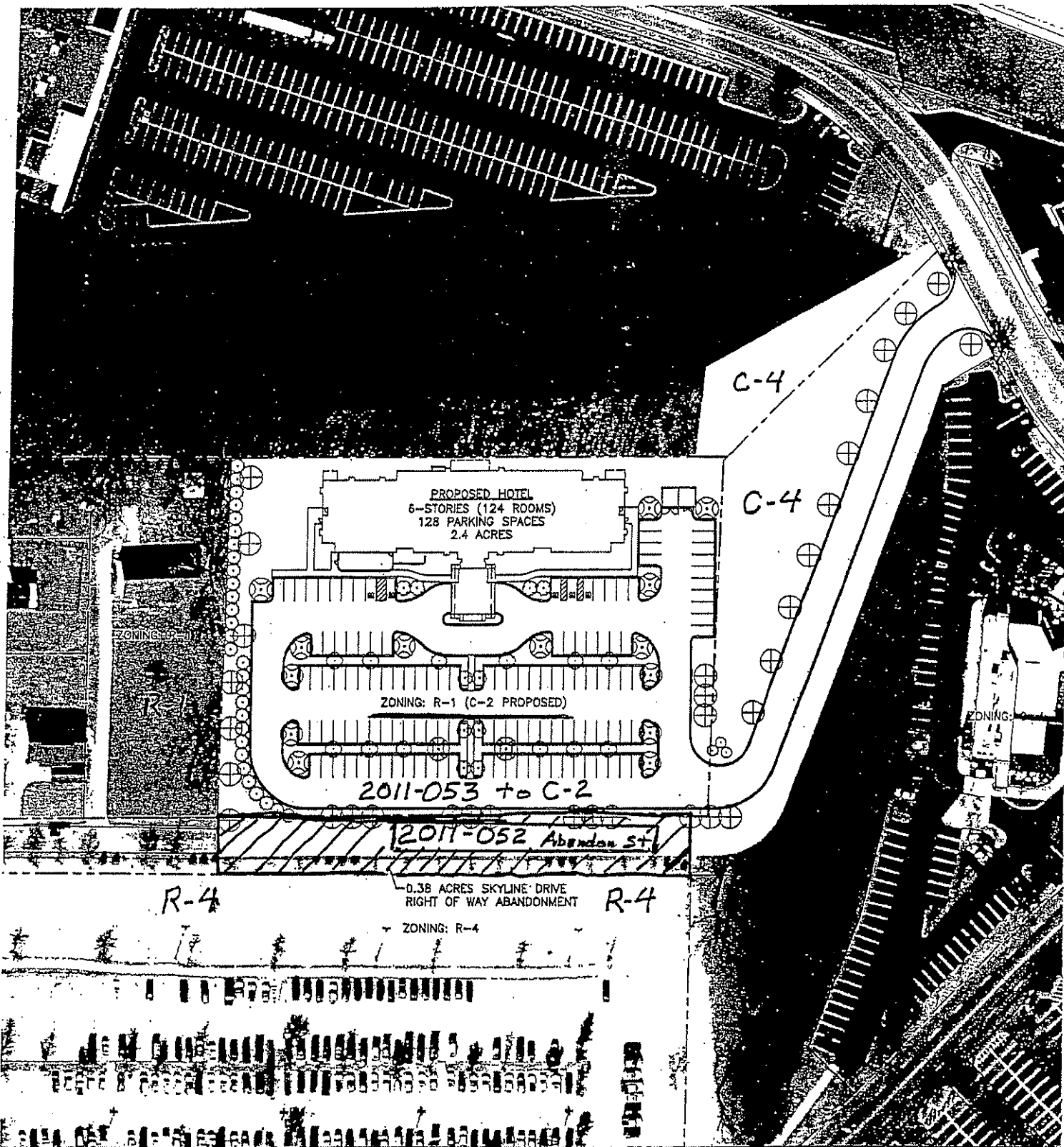


2011-0052 Case Map Abandon Street ROW

1 in. = 300.0 feet



Chattanooga - Hamilton County Regional Planning Agency



2011-052

 - Abandon ROW - Skyline Drive